



2024 Victorian Minnow Championships

17 February 2024 to 18 February 2024

Organising Authority:

Minnow Sailing Association Inc. (Victoria)

and

McCrae Yacht Club Inc.

Sailing Instructions

[NP] denotes that a breach of this rule will not be grounds for protest by a boat.

[DP] denotes a rule for which the penalty is at the discretion of the Jury and may be less than disqualification.

[SP] denotes a rule for which a standard penalty may be applied by the race committee without a hearing.

1. RULES

- 1.1 The regatta will be governed by the rules as defined in *The Racing Rules of Sailing (RRS 2021-2024)* and Minnow Sailing Association Rules of Measurement and Construction.
- 1.2 Australian Sailing Special Regulations Part 2 Off the Beach boats shall apply.
- 1.3 The Novice Fleet will sail under the *ISAF Introductory Rules for Racing* (refer Attachment D).
- 1.4 Arbitration will be conducted in accordance with Appendix T of the RRS.

2. ADVERTISING

- 2.1 Boats shall display advertising chosen and supplied by the organising authority.

3. NOTICES TO COMPETITORS

- 3.1. Notices to competitors, including changes to Sailing Instructions will be posted on the Official Regatta Notice Board located on the upper deck at McCrae Yacht Club. Notices will also be posted on the Sailor App regatta page entitled '2024 Victorian Minnow State Championship'

4. CHANGES TO SAILING INSTRUCTIONS

- 4.1. Any change to the Sailing Instructions will be posted at least 90 minutes prior to the scheduled race session on the day it will take effect, except that any change to the schedule of races will be posted by 1900 on the day before it will take effect.

5. SIGNALS MADE ASHORE

- 5.1. Signals made ashore will be made from the McCYC Flagstaff.
5.2. When flag AP is displayed ashore, '1 minute' is replaced with 'not less than 30 minutes'

6. SCHEDULE OF RACES and EVENTS

6.1 Date-Time-Activity

Date	Event	Time
Saturday 17th February 2024	Registration & Measurement	08:30 – 09:30
	Coach & Support Boat Registration	08:30 – 09:30
	Information Session	09:30
	Race Session 1	11:30 (1 st Warning)
	Race Session 2	After sailors have had a comfort break ashore
	BBQ (not included in regatta fee)	18:00
Sunday 18th February 2024	Race Session 3	10:30 (1 st Warning)
	Race Session 4	After sailors have had a comfort break ashore
	Presentation	After racing

- 6.2 Four races are scheduled on Saturday February 18th and three races on Sunday February 19th.
6.4 An additional race may be sailed in a session, provided the fleet does not become more than one race ahead of schedule.
6.5 On the last day of scheduled racing, no warning signal will be made after 1530hrs.
6.6 A maximum of seven (7) races will be sailed

7. CLASS FLAGS

- 7.1 Open and Junior Divisions: Black Minnow class emblem on a blue background.
7.2 Novice Division: Black Minnow class emblem on a green background.

8. THE COURSES

- 8.1 Racing will be conducted on separate courses for the Open (incorporating the Junior Division) and Novice fleets.
- 8.1 Attachment A shows the courses, including the order in which marks are to be passed, and the side on which to leave each mark.
- 8.3 Any boat entering a 'No Boating Zone' during racing may be disqualified without a hearing. The 'No Boating Zone' is found to the east of the Club and is defined by notional boundaries as indicated in Attachment C.

9. RACING AREAS

- 9.1 Attachment B shows the location of the racing areas on the waters of Port Phillip adjacent to McCrae Yacht Club.

10. MARKS

10.1 Open, and Junior Divisions

- 10.1.1 Mark 1, 2 and 3, will be pink inflatable cylindrical buoys.
- 10.1.2 The start pin (Mark A) will be a mark with an orange flag
- 10.1.3 The finish pin will be a mark with a blue flag
- 10.1.4 New marks will be yellow Inflatable buoys.
- 10.1.5 A stick mark with yellow flag mark may be streamed from the Race Committee vessel. If streamed, this mark shall be considered an extension of the Race Committee vessel.

10.2 Novice Division

- 10.2.1 Marks 1, 2 and 3 will be orange teardrop buoys.
- 10.2.2 The start pin and finish pin will be a mark with an orange flag

- 10.4 A race committee boat signalling a change of a leg of the course is a mark as provided in instruction 12.2.

11. THE START

- 11.1 The start sequence for all divisions will be a 3 minute sequence. This changes RRS 26.
- 11.2 To alert boats that a race or sequence of races will begin soon, the orange starting line flag will be displayed with one sound at least five minutes before a warning signal is made.
- 11.3 The Open / Junior Division starting line will be between a mast displaying an orange flag on the race committee vessel at the starboard end of the line and Mark A (stick mark with orange flag) at the port end.
- 11.4 The Novice starting line will be between a mast displaying an orange flag on the race committee vessel at the starboard end of the line and Mark A (stick mark with orange flag) at the port end.
- 11.5 A Clearance Bouy may be located behind the stern of the race committee vessel. Boats shall not pass between the Race Committee Vessel and the Clearance Bouy.
- 11.6 A boat which has not started 4 minutes after her starting signal will be scored Did Not Start without a hearing. This changes rule A4 and A5.

12 CHANGING THE NEXT LEG OF THE COURSE

- 12.1 To change the next leg of the course, the race committee will lay a new mark (or move the finishing line) and remove the original mark as soon as practicable. When in a subsequent change a new mark is replaced, it will be replaced by an original mark.
- 12.2 Boats shall pass between the race committee boat signalling the change of the next leg and the nearby mark, leaving the mark to port and the race committee boat to starboard. This changes rule 28.

13 THE FINISH

- 13.1 **Open/Junior fleet:** The finishing line will be between a mast displaying a blue flag on the race committee vessel and Mark B (stick mark displaying a blue flag).
- 13.2 **Novice Fleet:** The finishing line will be between a mast displaying a blue flag on the race committee vessel and Mark A (stick mark displaying an orange flag).
- 13.3 Code flag "L" flown on the finish boat will indicate that another race will be started following completion of the current race.

14 TIME LIMITS AND TARGET TIMES

- 14.1 **Open/Junior Fleet:** The target time for the first boat to complete the course will be 30 - 40 minutes and the time limit for the first boat to complete the course will be 70 minutes. Failure to meet the target time will not be grounds for redress. This changes rule 62.1(a).
- 14.2 **Novice Fleet:** The target time for the first boat to complete the course will be 20 – 30 minutes and the time limit for the first boat to complete the course will be 50 minutes. Failure to meet the target time will not be grounds for redress. This changes rule 62.1(a).
- 14.3 Boats failing to finish within thirty minutes of the first boat which sails the course and finishes will be scored Did Not Finish without a hearing. This changes rules 35, A4 and A5.
- 14.4 Boats at the Race Committee's discretion may be allocated a finishing position and be directed to return to the starting area or other location without crossing the finishing line. This changes rule 28.

15 ARBITRATION

- 15.1 The Racing Rules of Sailing, Appendix T shall apply with the Post Race Penalty T.1.b being amended as follows:
A Post Race Penalty is 20% of the difference between a boat's finishing place and the score for a DNF rounded up to the nearest whole number. Scores of other boats shall not be changed. The penalty shall not cause a boat to be scored worse than DNF.

16 PROTESTS AND REQUESTS FOR REDRESS

- 16.1 No protest or request for redress will be accepted unless the protesting boat notifies (and receives acknowledgement from) the finish boat on the water, immediately after finishing. (Immediately infers, prior to consulting coach or support boat). The protesting boat shall declare her intention to protest or seek redress and identify the boat(s) being protested or the redress being sought. Once the Blue Flag indicating the end of the Finish window is lowered no more protest notifications will be acknowledged. The only exemption from this clause is for boats that retire from the race. This changes RRS 61 and Rule 63.1.
- 16.2 Protest forms are available at the Regatta Office located in the tower on the upper deck. Protests and requests for redress or reopening shall be delivered there within the appropriate time limit.
- 16.3 For each division, the protest time limit is 60 minutes after the last boat in the division has finished the last race of the session, after Sailing Instruction 14 (and subrules) has been applied to that race, or the race committee signals no more racing today, whichever is later.
- 16.4 Notices will be posted no later than 30 minutes after the protest time limit to inform competitors of hearings in which they are parties or named as witnesses. Hearings will be held in the protest room, located at the rear of the race control tower, beginning at the time posted.
- 16.5 Notices of protests by the race committee or protest committee will be posted to inform boats under RRS 61.1(b).
- 16.6 Breaches of Sailing Instructions 2, 11.5 18, 20, 22, 23, 24 and 25 will not be grounds for a protest by a boat. This changes RRS 60.1(a). Penalties for these breaches may be less than disqualification if the protest committee so decides.
- 16.7 On the last scheduled day of racing a request for reopening a hearing shall be delivered
- (a) within the protest time limit if the requesting party was informed of the decision on the previous day;
 - (b) no later than 30 minutes after the requesting party was informed of the decision on that day.

This changes rule 66.

17 SCORING

- 17.1 See NOR Rule 10.
- 17.2 To request correction of an alleged error in posted race or series results, a competitor shall complete a Scoring Enquiry form available at the regatta office.

18 SAFETY REGULATIONS

- 18.1 Sign On and Sign Off: All boats must “sign on” before leaving the shore and “sign off” as soon as practicable after returning to shore at the completion of the session’s racing.
- 18.2 The Sign on period will close at the scheduled warning signal time of the first race for that session on that day.
- 18.3 The sign off period will close at the conclusion of protest time. That is, 60 minutes after the last boat has completed the last race of the session.
- 18.4 To Sign On and Sign Off each skipper shall use the Sailor App via a mobile device, or the tablet available in the Race Tower. Any results other than Finished shall be identified on the Declaration Sheet at the time of signing off.

- 18.5. Failure to Sign On/Sign Off in accordance with Sl.19.1 will result in that boat being scored a DPI (Discretionary Penalty Imposed) of 50% of their finishing place in the first race of the day without hearing. This changes Rule 63.1, A4 and A5.
- 18.6. A boat which retires from a race shall notify the race committee as soon as possible and sign off as soon as returning to shore.

19 REPLACEMENT OF EQUIPMENT

- 19.1 All competitors shall use only one sail.
- 19.2 Substitution of competitors or damaged or lost equipment will not be allowed unless authorised by the race committee.
- 19.3 Requests for substitution shall be made to the race committee at the first reasonable opportunity on forms available at the regatta office.
- 19.4 If damage occurs on the water, equipment may be substituted before the following race conditional upon a request being submitted in writing before the end of protest time on the same day and approved by the race committee.

20 EQUIPMENT AND MEASUREMENT CHECKS

- 20.1 A boat or equipment may be inspected at any time for compliance with the Minnow Sailing Association Rules of Measurement and Construction and sailing instructions. On the water, a boat can be instructed by a race committee equipment inspector or measurer to proceed immediately to a designated area for inspection.
- 20.2 Lifejackets in accordance with Special Regulation Part II for Off the Beach Boats (2017-2020 RRS), must be of suitable condition and weight appropriate for the competitor. These will be checked at measurement.

21 OFFICIAL BOATS

- 21.1 [NP] Official boats shall be marked with a McCrae Yacht Club burgee.

22 SUPPORT BOATS

22.1 Open and Junior Division:

- 22.1.1 Team managers, coaches and other support personnel shall register with the host Club at the time of Registration specified in the Schedule.
- 22.1.2 Support boats shall carry a VHF radio and comply with all local safety rules in accordance with Victorian Marine Regulations, and the instructions of the Race Committee.
- 22.1.3 Approved Support Boats shall keep at least 100m clear of the course area during racing, except when asked to assist by an official from the race committee. Failure to comply may result in the disqualification of all competitors associated with the infringement.

22.1.4 Support boats shall carry a VHF radio and monitor Ch 77 and comply with all Victorian Marine Regulations as well as the instructions of the Race Committee.

22.1.5 On water coaching is prohibited between the Warning Signal, and the completion of that race. On this signal, all non-race committee boats must promptly depart the race area exclusion zone for the duration of the race, unless called on to assist by the race committee. Failure to comply may result in the disqualification of all competitors associated with the infringement.

22.1.6 The race area exclusion zone is defined below:

- At least 100 metres clear of all course, start and finish marks.
- At least 100 metres outside the course area including lay lines.

22.1.7 This instruction continues to apply if a general recall or postponement is signalled but not after a race is abandoned.

22.1.8 When RRS 37 is enacted, all official and support boats must remain on water and shall monitor the race committee radio channel for search and rescue instructions as directed by the Race Officer. Failure to comply may result in the disqualification of all competitors associated with the infringement.

22.2 **Novice Division:**

22.2.1 The above Open and Junior Division regulations apply with the exception of official support boats registered with the Race Committee approved to provide on course support. This changes RRS 41.

23 RADIO COMMUNICATION

23.1 Except in an emergency, a boat that is racing shall not make voice or data transmissions and shall not receive voice or data communication that is not available to all boats.

24 RUBBISH DISPOSAL

24.1 Rubbish may be placed aboard support or official boats.

25 PRIZES

25.1 See NOR Rule 13

26 DISCLAIMER OF LIABILITY

- 26.1 Competitors participate in the regatta entirely at their own risk. See RRS 3, Decision to Race. The organising authority, officers, volunteers or staff will not accept any liability for material damage, personal injury, or death sustained in conjunction with or prior to, during, or after the regatta.

27 INSURANCE

- 27.1 Each participating boat shall be insured with valid third-party liability insurance with a minimum cover of \$10,000,000 per incident or the equivalent. Entrants in the Regatta are deemed to have declared that they hold such cover. Competitors may be required by the Organising Authority to produce evidence of such insurance and any competitor not holding such cover shall withdraw their entry.

28 BOAT STORAGE

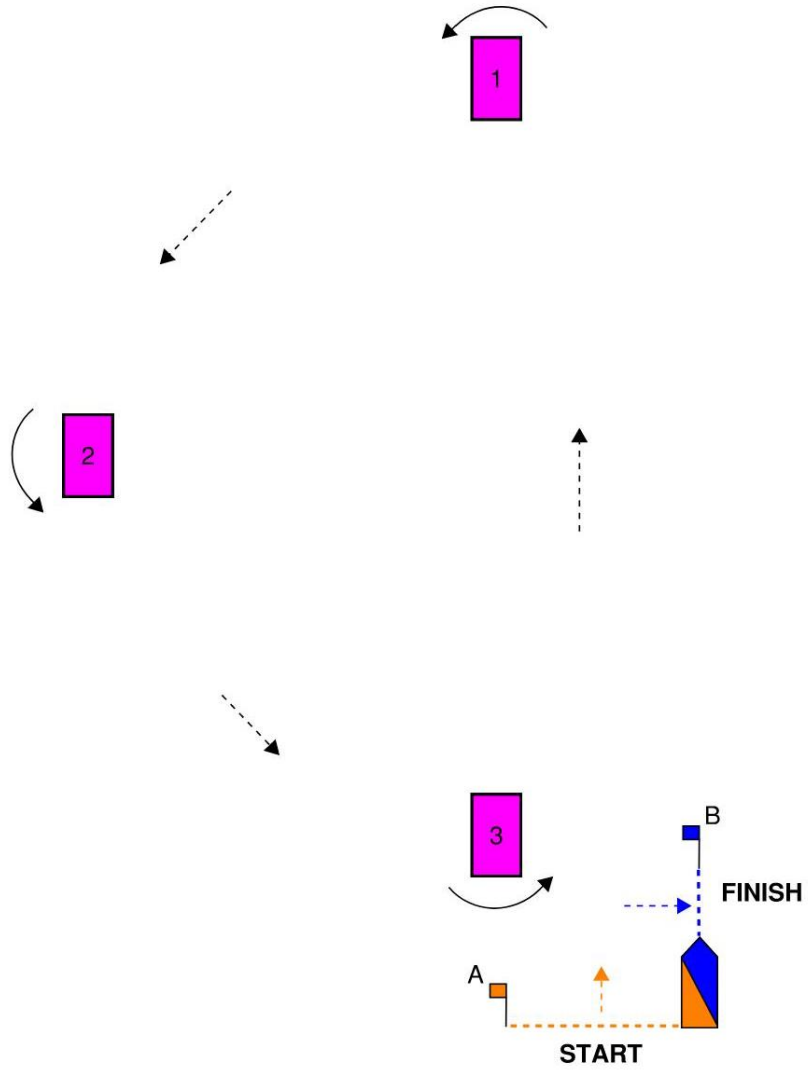
- 28.1 There is storage for road trailers for the duration of the regatta, subject to space being available.
- 28.2 Minnows are permitted to be left in the main yard and front lawn area of the Club for the duration of the regatta.
- 28.3 Storage is at the owner's risk.

ATTACHMENT A

Open and Junior Divisions

Start – 1 – 2 – 3 – 1 – 3 – Finish

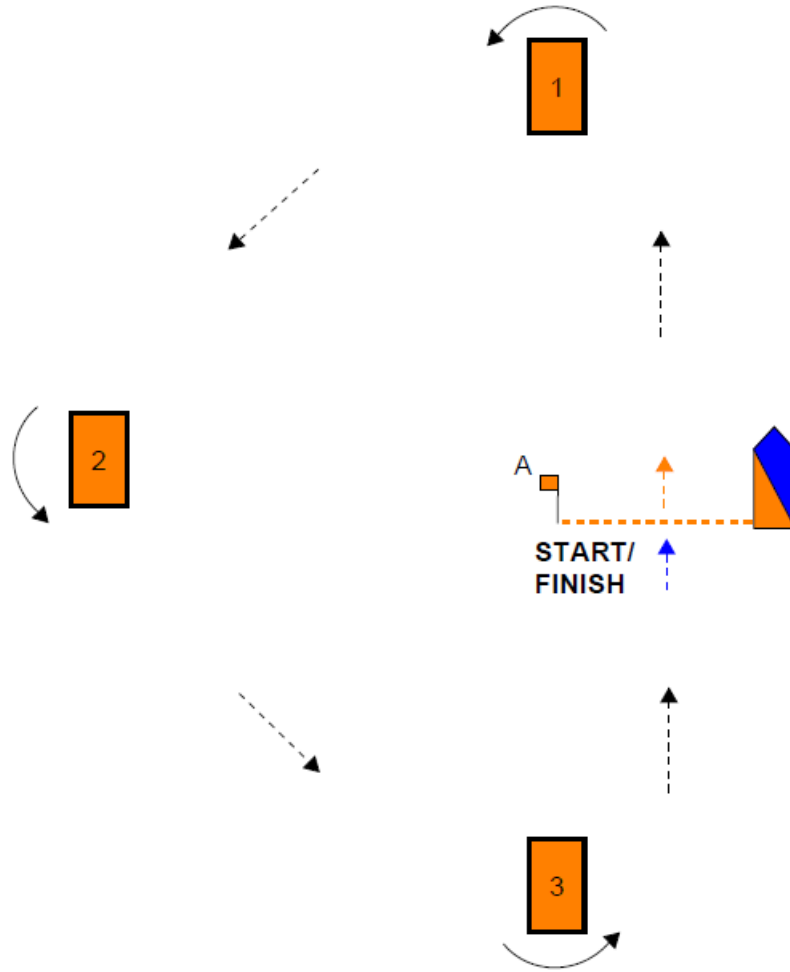
All marks to Port



Novice Division

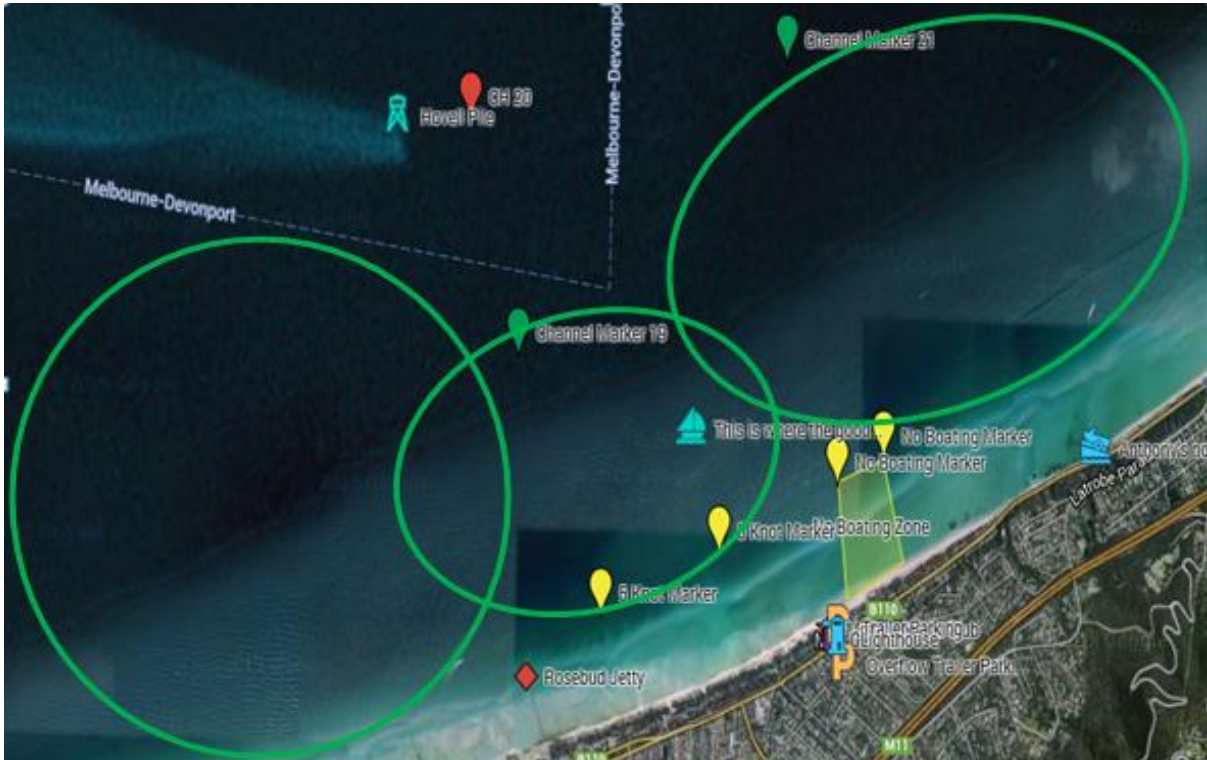
Course 1: Start – 1 – 2 – 3 – Finish

All marks to Port



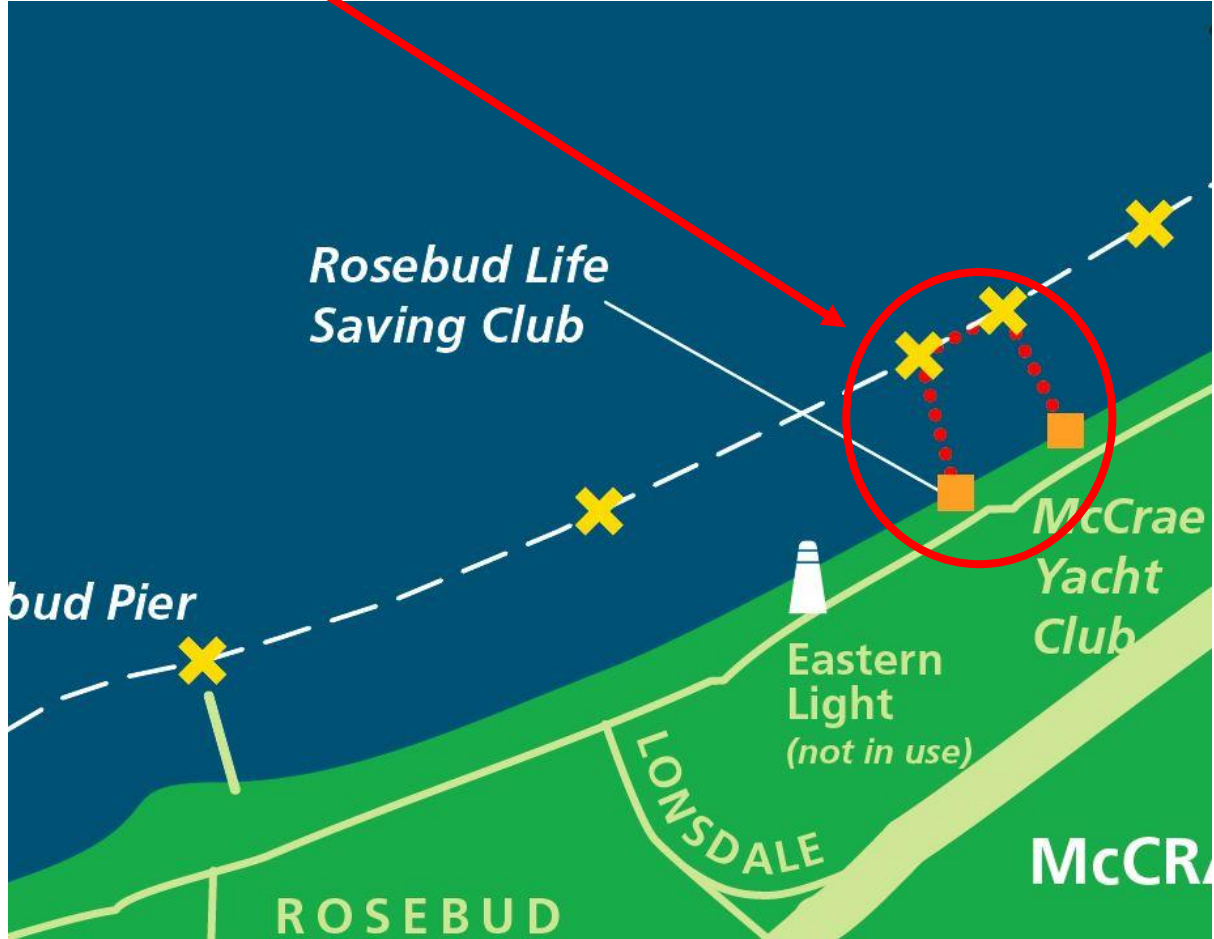
ATTACHMENT B

Location of racing areas



ATTACHMENT C

No Boating area



Attachment D – ISAF Introductory Rules for Racing



Introductory Rules for Racing

Version 1.01 - February 2008

Some Explanations

Windward and *Leeward*: The *leeward* side of your boat is the side where your mainsail lies. The *windward* side is the other side.

Port and *Starboard tack*: You are on *port* or *starboard tack* according to your *windward* side.

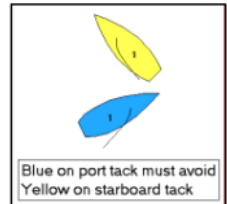
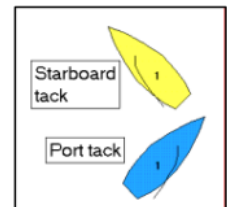
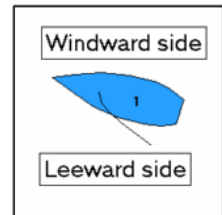
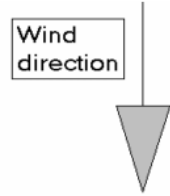
Advisor: A person appointed by the race organizers to assist competitors in understanding the rules and, when appropriate, to penalize a boat.

Basic Rules

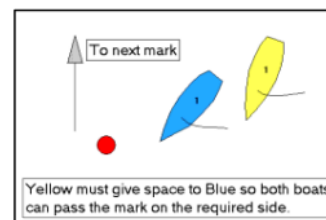
1. You must comply with the principles of good sportsmanship.
2. You must try not to collide with another boat.

Rules When Boats Meet

3. When you and the other boat are on opposite *tacks*, if you are on *port tack* you must avoid the boat on *starboard tack*.
4. When you and the other boat are on the same *tack*, you must avoid the other boat
 - (a) if she is in front of you, or
 - (b) if she is on your *leeward* side.



5. After starting, when you and the other boat approach a mark or an object that both boats need to avoid, and the other boat is between you and the mark or other object, you must give her sufficient space to pass it safely on the same side. However, when the boats are on opposite tacks at a windward mark, this rule does not apply.



6. When the other boat is required to avoid you, if you change course, you must give the other boat an adequate opportunity to avoid you.

Other Rules

7. At the starting signal you must be behind the starting line.
8. After the starting signal, you must sail the course described by the race organizers.
9. You must not touch a mark of the course.
10. If you think you or another boat has broken a rule or if you are unclear about the rules at any time during the race, you must describe the incident to the *advisor* after the race. The *advisor* may then add two points to the score of any boat that has broken a rule. If the offence is serious, the *advisor* may add extra points to the boat's score.

Responsibilities of Race Organizers

- (a) To run fair, enjoyable and safe races.
- (b) To inform all the competitors about the sequence of starting signals, the starting and finishing lines, the course to be sailed and the marks to be rounded.
- (c) To score each boat points equal to her finishing position, after adjusting for handicaps when appropriate.
- (d) To appoint an *advisor* on the rules and procedures for racing.

Introduction and Use

These rules are designed to stand on their own so that sailors who are starting to race can compete using only these few rules and without the need to learn the many details of the ISAF Racing Rules of Sailing (RRS). They are appropriate for small boats in sheltered waters; they are not intended for boats over 6 metres (20 feet) long when an experienced person should be alongside and able to instruct the novice helm. These rules are compatible with the principles and fundamental rules in the RRS. However, they are neither a guide to nor an abbreviated form of the RRS.

The rules are intentionally minimalist and they omit as many complications of the RRS as possible. They are written for sailors who are starting to race and with no more than 2 years of racing experience. After this period these sailors should be encouraged to sail races under the Racing Rules of Sailing.

Boats racing under these rules should race on their own course and should not share the course area or marks with boats racing under the RRS.

Unlike normal racing, there is an obligation on the race organisers to verbally brief all competitors about the marks, the course and all relevant race management matters.

The role of rules advisor is a vital part of teaching the rules. Ideally the rules advisor should be afloat and should watch the racing but, as a minimum, the advisor must be available for discussion immediately the sailors return ashore. The rules advisor may be the same person as the race officer.

The standard penalty for breaking a rule is necessarily small at this learning stage and the difficulties of penalty turns are avoided. As it is only the advisor that imposes a penalty, possible pressure on a less confident competitor while racing is avoided. Note this two place penalty applies to all errors (including starting and course errors) although there is provision for increasing the penalty to avoid any advantage being gained from the error.

Feedback

These rules are 'experimental'. Please let ISAF have your comments, criticisms and suggestions at www.sailing.org/contactisaf. The rules will be updated as required and the latest version published on the ISAF website www.sailing.org.